



MONTHLY MEMBERSHIP PROGRESS REPORT

District 5 SE

Results as of: 12/31/2018

GMT: OPEN

LOCATION SOUTH DAKOTA

GMT CA

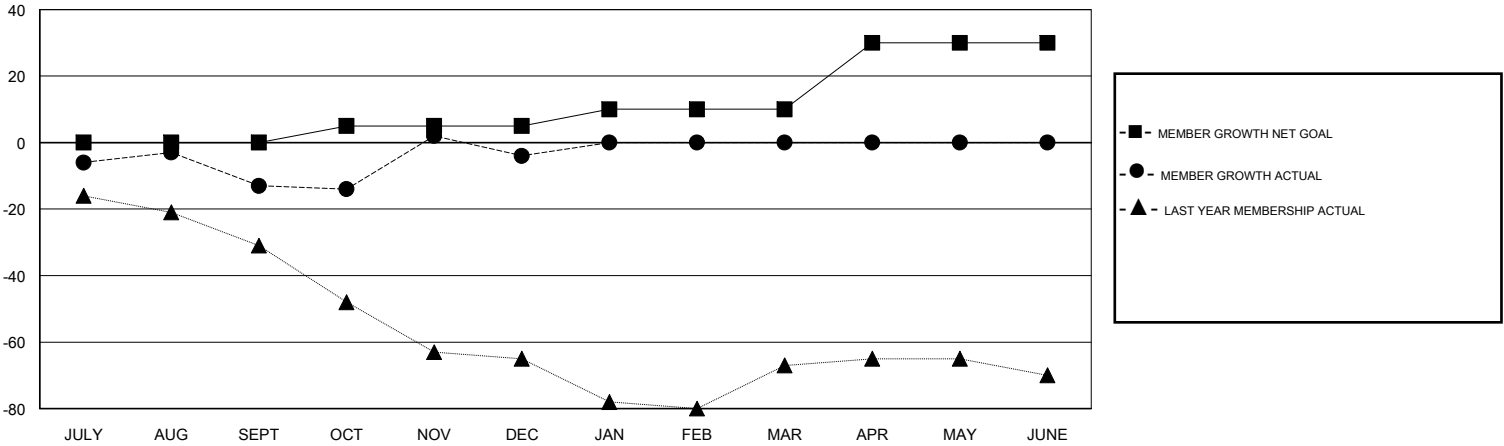
Clubs			
RESULTS FOR 2018-2019			
QUARTER	NEW CLUB GOAL	NEW CLUBS	DROPPED CLUBS
JULY/AUG/SEPT	0	0	0
OCT/NOV/DEC	0	0	0
JAN/FEB/MAR	0	0	0
APR/MAY/JUNE	1	0	0

Members			
RESULTS FOR 2018-2019			
QUARTER	MEMBER GROWTH NET GOAL	MEMBER GROWTH ACTUAL	DROPPED MEMBERS ACTUAL (including transfers)
JULY/AUG/SEPT	0	14	25
OCT/NOV/DEC	5	46	32
JAN/FEB/MAR	5	0	0
APR/MAY/JUNE	20	0	0

GOALS AND ACTUAL NEW CLUBS CUMULATIVE



GOALS AND ACTUAL MEMBERS CUMULATIVE



DROPPED CLUBS: 0

12 CLUBS OF 45 ADDED 1 OR MORE NEW MEMBERS

GENDER DISTRIBUTION	
MALE	895 (71.20%)
FEMALE	362 (28.80%)
Women Percentage Fiscal Year Goal: 30%	

DROPPED MEMBERS	
DECEASED	6
CLUB CANCELLED	0
OTHER	51
TOTAL	57

[CLICK HERE FOR CUMULATIVE MEMBERSHIP DATA](#)

TOTAL FAMILY UNIT MEMBERS	204
FAMILY MEMBERS PAYING HALF DUES	102